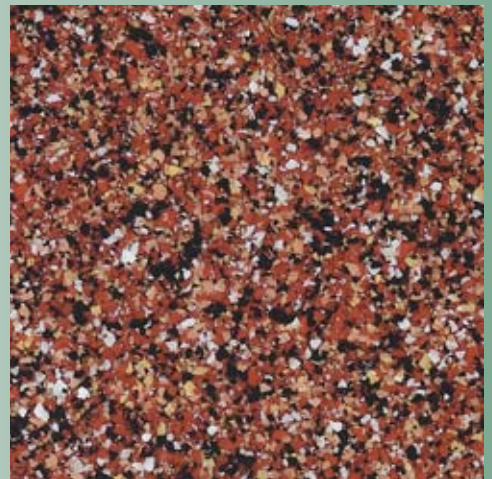
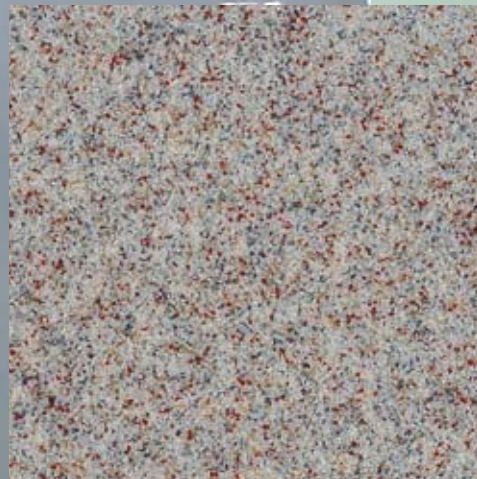
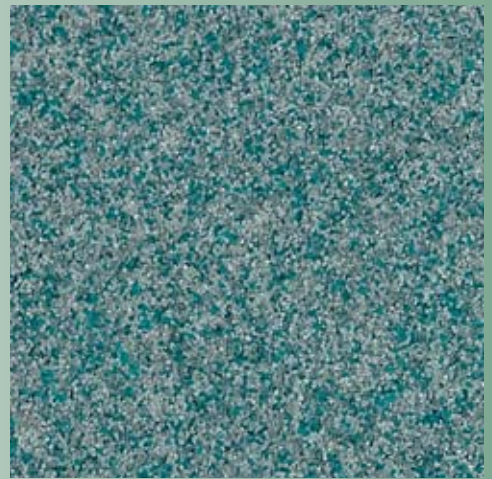
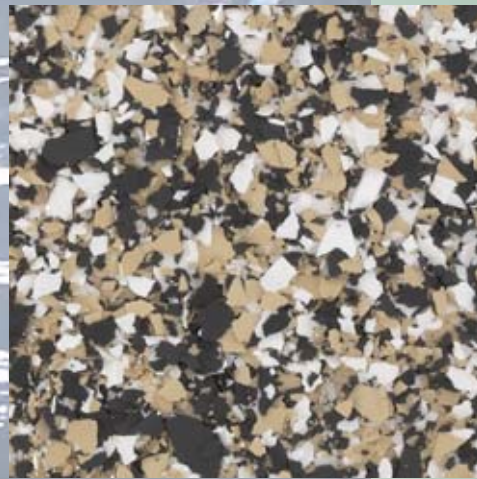


DUR-A-FLEX®

EPOXY
FLOORING
SYSTEMS



DUR-A-FLEX®
INNOVATION FROM THE FLOOR UP



Exceptional durability. Great looks. Outstanding value. The Dur-A-Flex® family of epoxy flooring systems offer the most protection for your money, providing superior resistance to chemical spills, heavy equipment and continuous traffic. Install a seamless, sanitary, easy to maintain surface that works as hard as you do, in any environment.

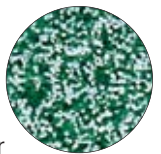
FLOOR SYSTEMS

Dur-A-Shield #2

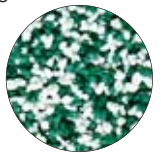
Consisting of a solvent-based epoxy prime coat and a finish coat, Dur-A-Shield creates a high strength surface that is high gloss, easy to clean and resistant to abrasion, oil, gasoline, acids and solvents.

Dur-A-Quartz

Deluxe, multi-colored quartz aggregate fused with clear 100% solids epoxy provides resistance to solvents, acids and other chemicals. Available in two grades: Q28 (fine) and Q11 (coarse), this system is the top choice for decorative flooring applications.



Q-28

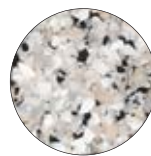


Q-11

Dur-A-Gard and Dur-A-Gard SL

Dur-A-Gard forms a smooth, high gloss finish and is also available in an orange peel finish formulation. If standard slip resistant performance is required, Non-Skid

Grit can be added during the application process. Dur-A-Gard SL contains special fillers, for self leveling applications where thicker systems from 35 -120 mils are desired.



MICRO

Dur-A-Chip

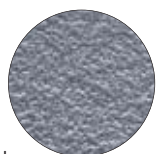
This decorative resurfacer fuses multi-color chips with 100% solids epoxy to provide a truly unique look. Chips are available in Macro and Micro sizes.



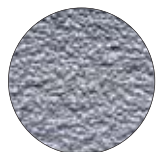
MACRO

Shop Floor

Natural colored quartz aggregate and pigmented Dur-A-Glaze Shop Floor epoxy make this the affordable industrial resurfacer. A solid color opaque, monolithic surface hides imperfections and stands up to abuse. Available in standard and coarse textures.



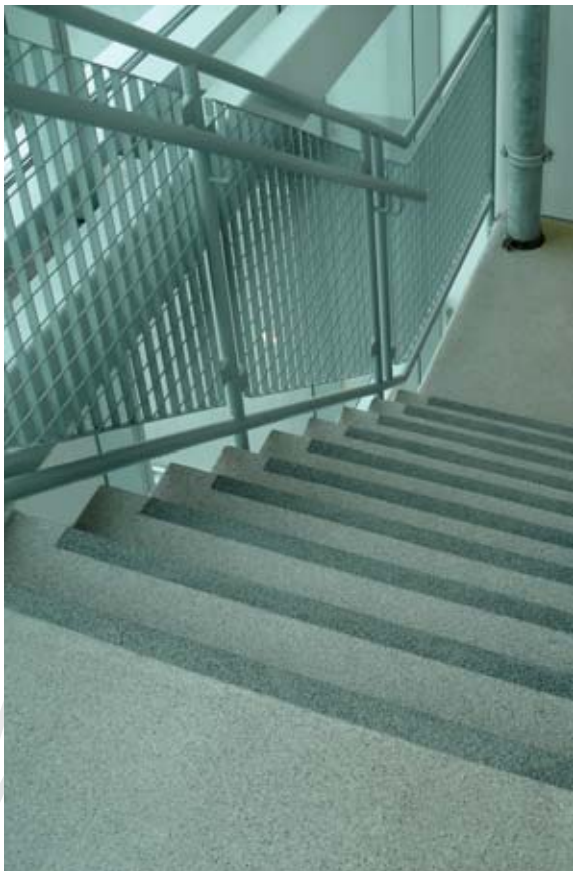
STANDARD



COARSE

Dur-A-Crete

This heavy duty, trowel applied resurfacer, incorporating epoxy resins and specially graded aggregates, is ideal for repair of badly spalled and eroded substrates.



ESD FLOOR SYSTEMS

Dur-A-Gard ESD

An epoxy-based ESD system offering low odor with a smooth finish. Good abrasion and chemical resistance in a two-component system.

Armor-Stat ESD

An epoxy-urethane ESD system offering superior abrasion and chemical resistance makes it one of the longest-wearing ESD floor systems available in the industry. The three-step system offers our highest static protection from primer through urethane topcoat. Excellent UV resistance ensures consistent color throughout the life of the floor.



FINISH TOPCOATS

Dur-A-Glaze Novolac

This 100% solids, no VOC, epoxy coating is specified as a topcoat when the ability to withstand corrosion and high heat is a priority.

Crete-Gard

Formulated especially for Dur-A-Crete trowel applied mortar systems, this super high viscosity hardener, saves time and material—enabling you to finish your floor with a single coating.

Armor Top®

This three component aliphatic urethane protective coating was formulated for high traffic areas to protect against chemicals and wear. It is recommended as a final topcoat over all Dur-A-Flex epoxy floor systems.

Dur-A-Glaze #5

Our no-odor, fast curing, UV resistant, clear topcoat; recommended for Dur-A-Quartz and Dur-A-Chip decorative floor systems or when an odor free topcoat is required.



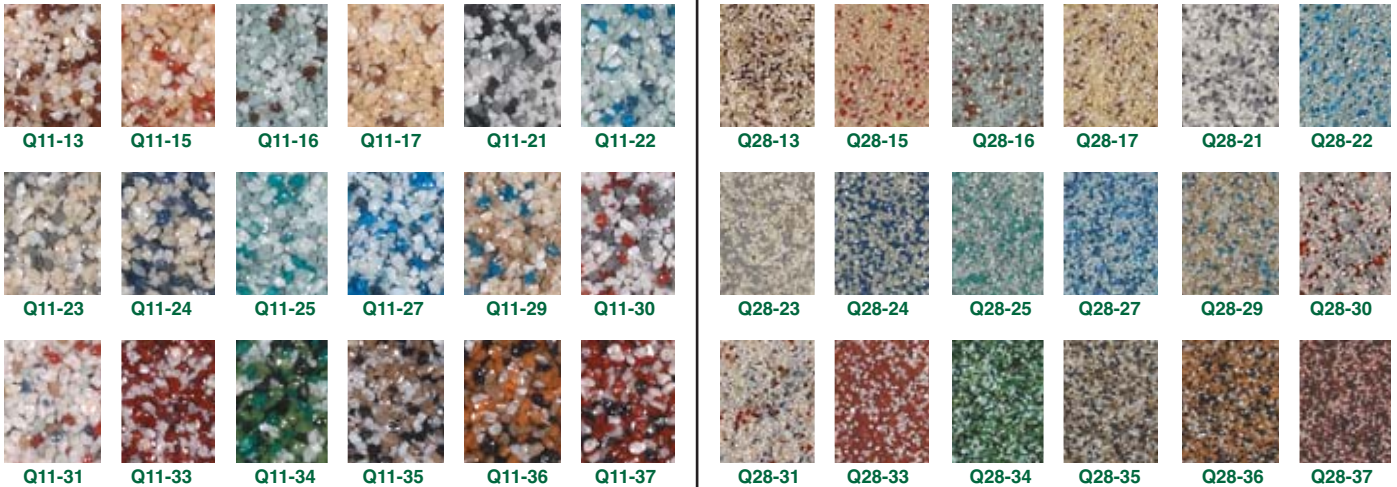
The samples shown are only close approximations and should not be used for specification purposes.
 Contact Dur-A-Flex to obtain actual samples for best color selection.

Standard Colors



**Not available in Shop Floor

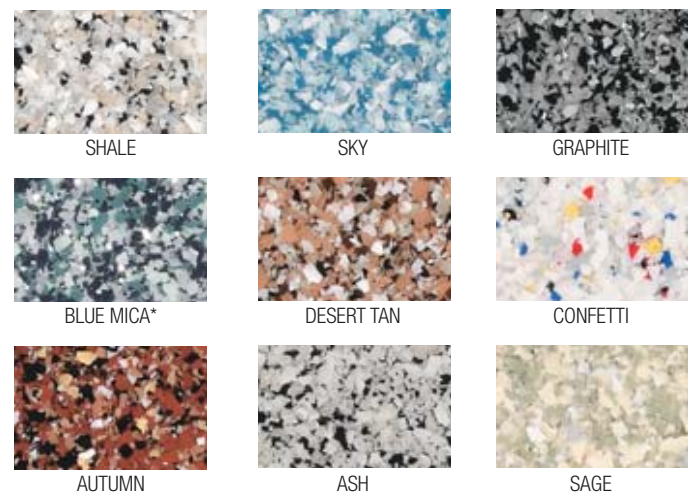
Quartz Blends



Macro Chip Blends



Micro Chip Blends



*Blue Mica contains silver metallic chip.

No one makes it easier to select, specify and install high performance flooring systems than Dur-A-Flex. Every step of the way, you'll experience superior customer service, professionalism and expertise as well as finely tuned processes—all the essentials which contribute to a solid business relationship.