

Another Quality  
Dur-A-Flex® Product

# SHOP FLOOR™

FLOORING SYSTEM



**E**xceptional durability. Great looks. Outstanding value. Dur-A-Flex® Shop Floor™ delivers it all. Tinted Dur-A-Glaze™ epoxy and natural quartz sand combine to create a flooring system that outlasts and outperforms all others.

Tailor-made for commercial and industrial settings such as:

- manufacturing plants
- fire stations
- laboratories
- pharmaceutical plants
- garages/service areas
- supermarkets
- animal care facilities

Shop Floor™ comes in 3 textures—non-skid, orange peel and smooth—to meet your specific flooring needs.

Ideal for restoration, repair or new construction, Shop Floor™:

**Bonds permanently** to most any type of sound substrate including concrete, quarry tile, brick pavers and plywood floors.

**Installs easily** using a broadcast or trowel method, in thicknesses of 1/16" to 1/4".

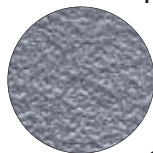
**Cures quickly** for minimal down time.



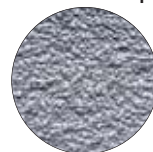
**STRONG**  
**VERSATILE**

**EASY TO MAINTAIN**  
**ECONOMICAL**

**SANITARY**



**STANDARD**



**COARSE**

This tough, dependable flooring system delivers the most protection for your money—providing superior resistance to chemical spills, heavy equipment, and continuous traffic. Shop Floor™, with its non-porous, seamless wall-to-wall construction and integral cove base, creates a neat, sanitary, easy-to-maintain surface that works as hard as you do—in any environment. And like all Dur-A-Flex® products, Shop Floor™ meets or exceeds USDA, FDA, and OSHA requirements.

To learn more about Shop Floor™ and the complete line of Dur-A-Flex® products, call us toll-free at 800-253-FLEX.

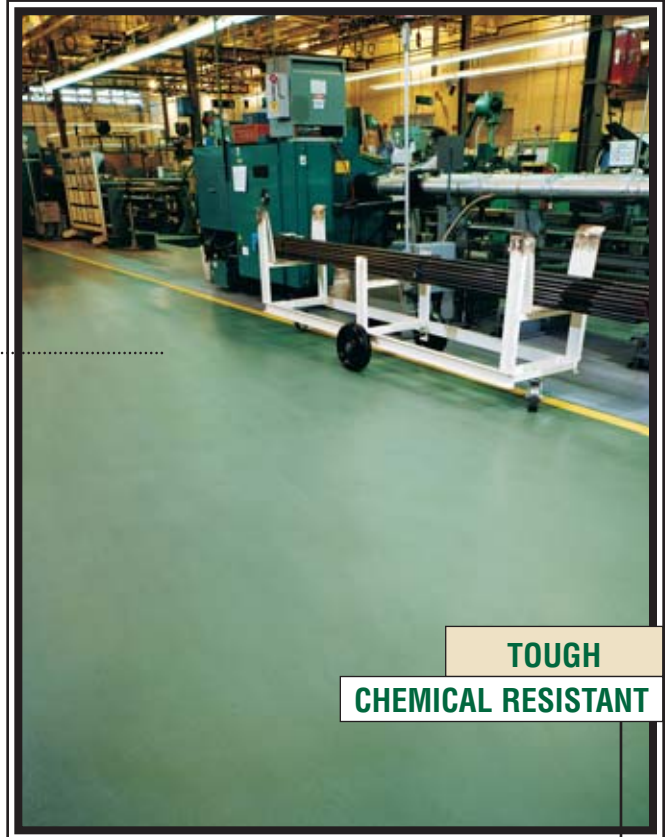
PERFORMANCE FLOORING SOLUTIONS  
**DUR-A-FLEX® Inc.**  
EPOXIES • MMA • URETHANES  
COLORED QUARTZ AGGREGATES

# Shop Floor™ delivers for...

## ...Manufacturing & Industrial Plants

In printing plants and factories, machine shops and chemical plants, Shop Floor™ works overtime to beautify and protect. Created to provide a clean, neat surface that guards against industrial and manufacturing abuse, Shop Floor™ withstands repeated exposure to chemicals, oils, harsh detergents and heavy traffic—and still looks great.

Available in three surface textures—standard non-skid, orange peel and smooth—this 100% solids epoxy flooring system mixes strength and durability with unparalleled safety. And when paired with our unique binders and topcoats, the best becomes even better. Add Poly-Thane 2™ High Solids, our premier chemical resistant topcoat, for extra protection against solvents, acids, and alcohols. Or, select Dur-A-Glaze Novolac™, our extraordinary chemical and heat resistant epoxy binder and topcoat, which helps make Shop Floor™ nearly indestructible—even under the toughest conditions. When good looks and peak performance are the requirements, Shop Floor™ is perfect for the job.



**TOUGH  
CHEMICAL RESISTANT**

*Up to five times stronger than concrete, Shop Floor™ is the industrial-strength flooring solution.*

**VERSATILE**



**SANITARY  
SHOCK RESISTANT**

*Chemical resistant and easy to maintain, Shop Floor™ can take the heat.*

**LOW MAINTENANCE**

## ...Fire Stations

Shop Floor puts safety and reliability on the roster for fire stations.

Fire stations are no place for mediocre and inferior floor systems. The floor needs to be durable and able to stand up to the daily routine and traffic associated with responding to fire calls. Shop Floor™ is able to stand up to weather conditions, moisture, chemicals and impact from hot tires and heavy equipment.

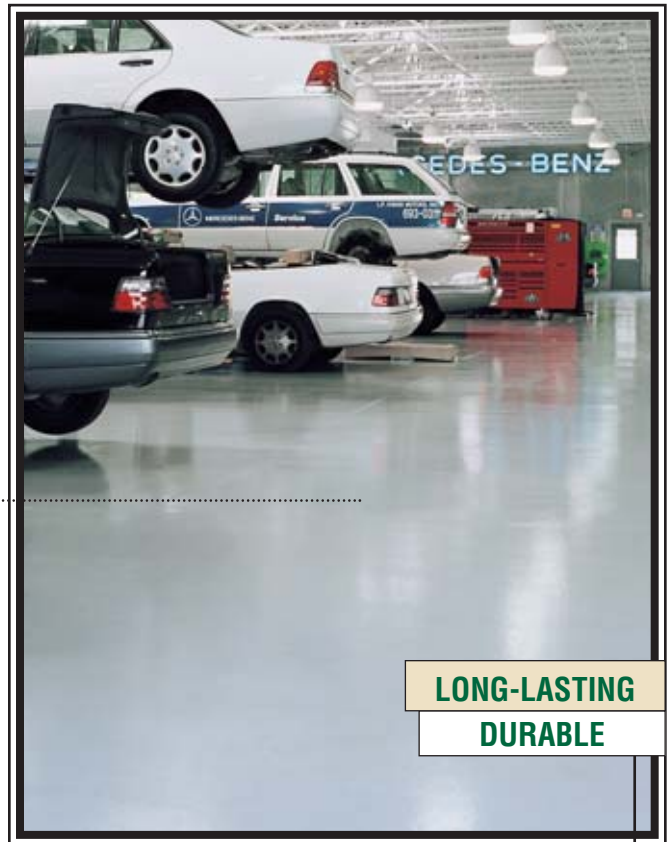
Under normal use the floor should resist chemicals, demonstrate abrasion resistance and resist impact, but it must also provide a slip resistant surface for human traffic. Shop Floor™ delivers all of that and more—it is a seamless system and therefore provides an easy to clean surface which works best for hazmat decontamination.

Compared to the thin film coatings used in fire stations in the past, Shop Floor™ delivers superior performance to ensure safety and ease of maintenance for years to come.

## ...Garages & Service Areas

**H**heavy traffic, high temperatures and harsh spills can wreak havoc on the average garage floor. But, they're no match for Shop Floor™. Designed to protect service areas, apparatus bays and hangars from the constant wear-and-tear of equipment and abrasive chemicals, Shop Floor™ stands up to your toughest challenges.

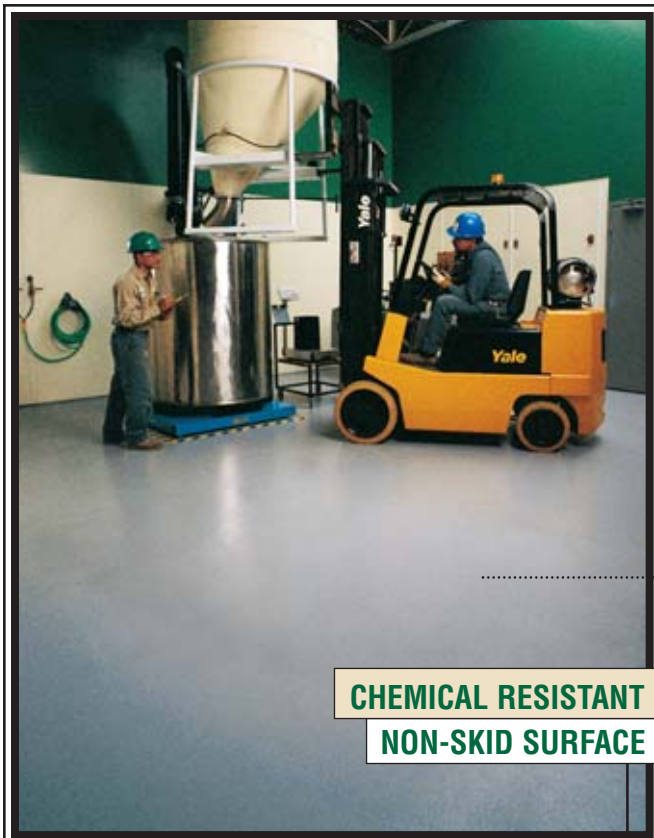
Aircraft hangers, fire and rescue stations and automotive repair shops benefit from our unique formula combining Dur-A-Glaze Novolac™ epoxy with clear quartz to produce maximum thermal shock and corrosion resistance. Up to five times stronger than concrete alone, Shop Floor™ doesn't crack or peel, and its non-skid surface makes it as safe as it is sound. Long-lasting, economical and easy to maintain, Shop Floor™ won't deteriorate—even under constant exposure to gasoline, hydraulic and brake fluids, oil and anti-freeze.



**LONG-LASTING  
DURABLE**

*Choose Shop Floor™ for a cleaner, brighter work setting.*

**LIGHT REFLECTIVE**



**CHEMICAL RESISTANT  
NON-SKID SURFACE**

*Seamless and easy to maintain, Shop Floor™ stands up to the test.*

**EASY TO CLEAN**

## ...Laboratories & Pharmaceutical Plants

**W**hen sanitation and safety are part of the equation, researchers know Shop Floor™ will supply the answer. This 100% solids epoxy flooring system is ideally suited for labs, pharmaceutical plants and research facilities, due to its heavy duty seamless application and protective urethane topcoat.

Easy to clean and maintain, Shop Floor™ resists caustic spills and harsh abrasives, while its non-skid surface texture provides increased traction—even when wet. What's more, Shop Floor™ formulated with Bio-Pruf® helps stop the odors, permanent stains, and bacterial growth often associated with food, cosmetic, and medical research—making them as versatile as they are durable. For laboratories and pharmaceutical plants that look better and last longer, don't experiment. Choose Dur-A-Flex® Shop Floor™ for the best result every time.

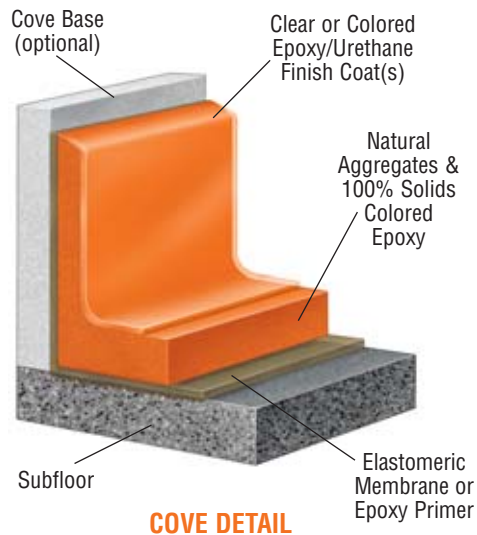
# Shop Floor™ Epoxy Flooring

## Physical Properties Guide

| Physical Property               | Test Method | Nominal 1/8"                        |
|---------------------------------|-------------|-------------------------------------|
| Hardness (Shore D)              | ASTM D-2240 | 75-80                               |
| Compressive Strength            | ASTM D-695  | 17,500 psi                          |
|                                 | ASTM C-579  | 12,500 psi                          |
| Tensile Strength                | ASTM D-638  | 4,000 psi                           |
|                                 | ASTM C-307  | 2,600 psi                           |
| Tensile Elongation              | ASTM D-638  | 7.50%                               |
| Flexural Strength               | ASTM D-790  | 6,250 psi                           |
|                                 | ASTM C-580  | 4,500 psi                           |
| Flexural Modulus of Elasticity  | ASTM D-790  | 6.2 x 10 <sup>5</sup>               |
| Coefficient of Linear Expansion | ASTM D-696  | 2 x 10 <sup>-5</sup>                |
| Bond Strength to Concrete       | ASTM D-4541 | 400 psi substrate fails             |
| Indentation                     | ML D-3134   | .025 MAX                            |
| Impact Resistance               | ML D-3134   | Pass                                |
| Water Absorption                | ASTM D-570  | 0.04%                               |
| Heat Resistance Limitation      |             | 140°F - 200°F                       |
| Flammability                    | ASTM D-635  | Self Extinguishing                  |
| Flame Spread/NFPA 101           | ASTM E-84   | Class A                             |
| Abrasion Resistance             | ASTM D-4060 | CS17 Wheel 1000 GM Load 1000 Cycles |
|                                 |             | 24 mg loss                          |
| Coefficient of Friction         | ASTM D-2047 | Standard Slip-Resistant             |
|                                 |             | Orange Peel                         |
|                                 |             | Smooth                              |
|                                 |             | VOC Content                         |



Full-size color chart available upon request.



COVE DETAIL

## Chemical Resistance Guide Legend: R=Recommended, S=Splash and Spill, N=Not Recommended

| Reagent*                 | Reg. or KF | CR4 | Novolac | Reagent*               | Reg. or KF | CR4 | Novolac |
|--------------------------|------------|-----|---------|------------------------|------------|-----|---------|
| Acetic Acid 10%          | R          | R   | R       | Hydrofluoric Acid 40%  | N          | S   | R       |
| Acetone                  | N          | N   | R       | Hydraulic Fluid        | R          | R   | R       |
| Acetic Acid Glacial 100% | N          | S   | R       | Isopropyl Alcohol      | S          | R   | R       |
| Ammonium Hydroxide 28%   | R          | R   | R       | Lactic Acid 20%        | R          | R   | R       |
| Benzene                  | N          | S   | S       | Methyl Isobutyl Ketone | N          | S   | S       |
| Brake Fluid              | R          | R   | R       | Methylene Chloride     | N          | N   | R       |
| Calcium Chloride 30%     | R          | R   | R       | Mineral Spirits        | S          | S   | R       |
| Clorox (Full Strength)   | R          | R   | R       | Motor Oil              | R          | R   | R       |
| Coca Cola                | R          | R   | R       | Mustard                | R          | R   | R       |
| Cottage Cheese           | R          | R   | R       | Nitric Acid 10%        | N          | S   | R       |
| Chromic Acid 10%         | S          | R   | R       | Phosphoric Acid 85%    | N          | S   | R       |
| Citric Acid 30%          | S          | R   | R       | Salt Water             | R          | R   | R       |
| Ethyl Alcohol 95%        | N          | N   | R       | Spic and Span 30%      | R          | R   | R       |
| Ethylene Glycol          | R          | R   | R       | Syrup                  | R          | R   | R       |
| Ethylene Dichloride 10%  | R          | R   | R       | Sulfuric Acid 30%      | S          | R   | R       |
| Ferric Chloride          | R          | R   | R       | Sodium Hydroxide 30%   | R          | R   | R       |
| Gasoline                 | R          | R   | R       | Silver Nitrate         | R          | R   | R       |
| Glycerin                 | R          | R   | R       | Tide Detergent         | R          | R   | R       |
| Hydrogen Peroxide 6%     | R          | R   | R       | Trichloroethylene      | N          | N   | R       |
| Hydrochloric Acid 30%    | R          | R   | R       | Tri-sodium Phosphate   | R          | R   | R       |

\*Reagents listed in bold may stain. Chemical and stain resistance can be improved with high performance topcoats. Resistance can be improved by using Poly-Thane™ as a topcoat(s).  
 Note: Testing should not be conducted until coating cures 7-10 days at 70°F. Bio-Pruf® is a registered trademark of Rohm and Haas Company; it's subsidiaries, and its affiliates in the U.S.