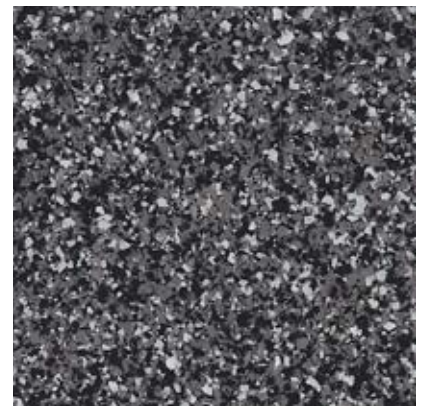
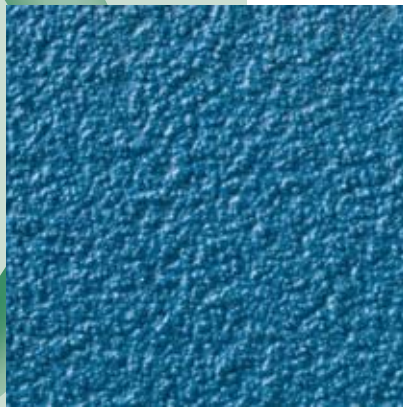


COMMERCIAL • INDUSTRIAL • INSTITUTIONAL

RESINOUS FLOORING SYSTEMS



DUR-A-FLEX
INNOVATION FROM THE FLOOR UP



Resurfacers



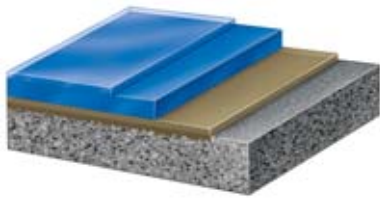
Clear or pigmented epoxy, acrylic or urethane binders fuse with multi-colored or natural quartz aggregate to create a monolithic matrix layer with high tensile strength and superior longevity.

This heavy duty resurfacer restores spalled or eroded concrete in the most demanding abrasive wear environments. Available in standard slip resistant, orange peel and smooth textures.

		Heavy Duty Epoxies				Urethanes
		DUR-A-GARD SL Nominal 1/8"	SHOP FLOOR DUR-A-QUARTZ Nominal 1/8"	DUR-A-CRETE Nominal 1/4"	DUR-A-CHIP Nominal 1/8"	POLY-CRETE HF# Nominal 1/4"
Physical Property	Test Method					
Hardness (Shore D)	ASTM D-2240	70-80	75-80	80	75-80	85
Compressive Strength	ASTM D-695	16,000 psi	17,500 psi	17,500 psi	16,000 psi	NA
	ASTM C-579	10,500 psi	12,500 psi	12,500 psi	10,500 psi	8,500 psi
Tensile Strength	ASTM D-638	3,000 psi	4,000 psi	2,500 psi	3,700 psi	NA
	ASTM C-307	1,950 psi	2,600 psi	1,800 psi	1,800 psi	1,000 psi
Tensile Elongation	ASTM D-638	7.50%	7.50%	7.00%	7.50%	4.50%
Flexural Strength	ASTM D-790	4,000 psi	6,250 psi	(C-293) 5,900 psi	4,700 psi	NA
	ASTM C-580	2,900 psi	4,500 psi	4,200 psi	3,900 psi	2,300 psi
Flexural Modulus of Elasticity	ASTM D-790	5.5 x 10 ⁵	6.2 x 10 ⁵	6.0 x 10 ⁵	5.0 x 10 ⁵	1.7 x 10 ⁵
Linear Shrinkage	ASTM D-2566	0.02%	0.02%	0.02%	0.02%	0.04%
Linear Expansion	ASTM C-531	2 x 10 ⁻⁵	2 x 10 ⁻⁵	2 x 10 ⁻⁵	2 x 10 ⁻⁵	2 x 10 ⁻⁵
Bond Strength to Concrete	ASTM D-4541	400 psi substrate fails	400 psi substrate fails	400 psi substrate fails	400 psi substrate fails	400 psi substrate fails
Indentation	ML D-3134	.025 MAX	.025 MAX	No indentation	.025 MAX	Pass
Impact Resistance	ML D-3134	Pass	Pass	Pass	Pass	Pass
Water Absorption	ASTM D-570	0.04%	0.04%	0.04%	0.04%	0.04%
Heat Resistance Limitation		140°F to 200°F	140°F to 200°F	140° F to 200° F	140°F to 200°F	-100°F to 220°F
Flammability	ASTM D-635	Self Extinguishing	Self Extinguishing	Self Extinguishing	Self Extinguishing	Self Extinguishing
Flame Spread/NFPA 101	ASTM E-84	Class A	Class A	Class A	Class A	Class B
Abrasion Resistance	ASTM C-501					
CS17 Wheel 1000 GM Load 1000 Cycles		35 mg loss	24 mg loss	18 mg loss	24 mg loss	50 mg loss
Coefficient of Friction	ASTM D-2047					
Standard Slip-Resistant		NA	0.9	0.95 Unsealed	0.8	0.9
Orange Peel		0.8	0.8	0.8	NA	NA
Smooth		0.7	0.7	0.7	0.7	NA
VOC Content		3.5 g/L	8.0 g/L (SF) 0 g/L (DAQ)	0 g/L	0 g/L	0 g/L

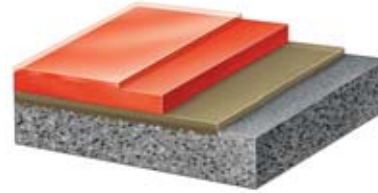
FLOORING SYSTEMS

Performance Topcoats



The perfect finish for epoxy or methyl methacrylate flooring systems, a performance topcoat makes your floors more chemical and abrasion resistant while imparting a high gloss, low glare satin or flat finish.

Coatings/Floor & Wall



Quality coatings are the key components in any flooring system. High strength, abrasion resistant epoxy or acrylic coatings can be further enhanced with Bio-Pruf™ antimicrobial treatment, chemical and heat resistant Novolac and other special formulations.

	Hybrids			Quick Curing Methyl Methacrylates (MMA)		
POLY-CRETE MDB ^{***} Nominal 1/4"	HYBRI-FLEX MQ [#] HYBRI-FLEX MB [#] Nominal 1/4"	HYBRI-FLEX EQ [#] HYBRI-FLEX EB [#] Nominal 1/4"	HYBRI-FLEX AQ [#] Nominal 1/4"	CRYL-A-STAIN [#] CRYL-A-SHIELD [#] 30-45 MILS	CRYL-A-FLOOR ^{**} CRYL-A-QUARTZ ^{**} 1/8"-1/4"	CRYL-A-CHIP [#] CRYL-A-CHIP SL [#] 1/16"-1/4"
85	88-92	75-80	(D-3363) 3H	88-92	88-92	88-92
NA	(C-109) 8,300 psi	17,500 psi	17,500 psi	(C-109) 6,000 psi	(C-109) 8,300 psi	(C-109) 6,000 psi
8,990 psi		12,500 psi	12,500 psi			
2,175 psi	2,000 psi	4,000 psi	(D-2370) 7,000 psi	3,555 psi	2,000 psi	3,555 psi
1,000 psi	1,350 psi	2,600 psi		2,400 psi	1,350 psi	1,350 psi
4.50%	7.50%	7.50%	(D-2370) 9%	34%	7.50%	7.50%
5,075 psi	3,700 psi	6,250 psi	(D-1737) Pass	3,500 psi	3,700 psi	3,700 psi
2,400 psi	2,700 psi	4,500 psi		2,500 psi	2,700 psi	2,700 psi
2.0 x 10 ⁻⁵	4.7 x 10 ⁻⁵	6.2 x 10 ⁻⁵	6.2 x 10 ⁻⁵	4.5 x 10 ⁻⁵	4.7 x 10 ⁻⁵	4.7 x 10 ⁻⁵
0.06%	0.02%	0.03%		0.02%	0.02%	0.02%
2 x 10 ⁻⁵	3.5 x 10 ⁻⁵	2 x 10 ⁻⁵		3.5 x 10 ⁻⁵	3.5 x 10 ⁻⁵	3.5 x 10 ⁻⁵
400 psi substrate fails	400 psi substrate fails	400 psi substrate fails	400 psi substrate fails	400 psi substrate fails	400 psi substrate fails	400 psi substrate fails
Pass	.025 MAX	.025 MAX		.032 MAX	.025 MAX	.030 MAX
Pass	Pass	Pass	Pass	Pass	Pass	Pass
0.04%	0.04%	0.04%	0.04%	0.04%	0.04%	0.04%
-100°F to 220°F	140°F to 160°F	140°F to 200°F	140°F to 200°F	140°F to 160°F	140°F to 160°F	140°F to 160°F
Self Extinguishing	Self Extinguishing	Self Extinguishing	Self Extinguishing	Self Extinguishing	Self Extinguishing	Self Extinguishing
Class B		Class A	Class A			
			(D-2047) >0.6			
50 mg loss	21 mg loss	24 mg loss	(D-4060) 15 mg loss	29 mg loss	21 mg loss	29 mg loss
			>0.6			
0.9	0.7	0.9	NA	NA	0.7	0.8
NA	NA	0.8	NA	NA	NA	NA
NA	0.5	0.7		0.5	0.5	0.7
0 g/L	<5 g/L (Base Coat) 74 g/L (Armor Top), 340 g/L (Poly 2HS)	<5 g/L (Base Coat) 74 g/L (Armor Top), 340 g/L (Poly 2HS)	5 g/L	80-90 g/L	80-90 g/L	80-90 g/L

Bio-Pruf™ is a registered trademark of Dow Chemical Company or affiliated company of Dow.

Contributes to LEED®

*Also available in SL formulation

** Available in MD and TC formulations

Heavy Duty Epoxies & Urethanes



All epoxy products meet the guidelines of FDA and USDA. Our urethane products meet the guidelines of FDA, USDA, NSF and CFIA. All Dur-A-Flex products can be configured to be VOC- and ADA-compliant.



United States
Food and Drug
Administration



United States
Department of
Agriculture



National
Sanitation
Foundation



Canadian Food
Inspection
Agency



American
Disability
Act

Primers & Sealers

A penetrating, low viscosity prime coat is the ideal surface preparation for the full range of flooring systems and resurfacers because it seals and protects substrates, while creating a uniform bonding surface.

Dur-A-Shield

Consisting of a solvent-based epoxy prime coat and a finish coat, Dur-A-Shield creates a high strength surface that is high gloss, easy to clean and resistant to abrasion, oil, gasoline, acids and solvents.

Dur-A-Glaze® Tie Coat II Special Adhesive Primer

When an extra strong bond is required for your primary coat, Dur-A-Glaze Tie Coat II offers maximum adherence. This coating is specifically designed to adhere tenaciously to existing epoxy and urethane coatings and resurfacers as well as superhard concrete, ceramic tiles or quarry tiles.

Dur-A-Glaze #4 WB Primer

A two component, water-borne, low-VOC epoxy designed to prime new or existing concrete floors.

Applications: Warehouses, Machine Shops, Garages, Walkways, Auditoriums, Laundries and Hangars

Membranes & Crack Fillers

To reduce stress between flooring layers and prevent crack transmission, a shock absorbing, elastomeric membrane significantly improves performance.

Elast-O-Coat Waterproof Membrane

This two part, 100% solids, elastomer modified epoxy can be used with or without a primer coat to form a waterproof layer that also protects overlying layers from stress and crack transmission, while helping to dampen vibration. Elast-O-Coat conforms to virtually any shape or contour.

Dur-A-Glaze Flex Resin

A seamless, fluid-applied, waterproof membrane for a quick turn around time or when a surface cannot be dried thoroughly. It can also be used as a crack and joint filler.

Applications: Shower Rooms, Washrooms, Medical Research Labs, Drum Storage Areas, Secondary Containment, Mechanical Rooms, Potable Water Storage, Animal Housing Areas, Cagewash Areas and Wet Processing Areas



Resurfacers

Dur-A-Flex flooring systems for decorative and industrial applications, available with various degrees of slip resistance and performance enhancing features.

Shop Floor

Natural quartz aggregate and pigmented Dur-A-Glaze Shop Floor epoxy make this the affordable industrial resurfacer. An opaque, monolithic surface hides imperfections and stands up to abuse.

Dur-A-Quartz

Deluxe, multi-colored quartz aggregate fused with clear 100% solids epoxy for moderate resistance to solvents, acids and other chemicals. The top choice for decorative flooring applications. Available in two grades: Q28 (fine) and Q11 (coarse).

Dur-A-Chip

This decorative resurfacer features multi-color chips to provide a truly unique look. Multi-color chips are fused with 100% solids epoxy. Chips are available in Macro and Micro sizes.

Dur-A-Crete

This heavy duty, trowel applied resurfacer, incorporating epoxy resins and specially graded aggregates, is ideal for repair of badly spalled and eroded substrates.

Poly-Crete® HF

Our trowel-applied cementitious urethane features exceptional durability, thermal cycling, high service temperature capabilities and rapid installation time.

Poly-Crete MD

This 100% solids, aromatic cementitious urethane system is blended with graded silica and fine fillers to produce a self leveling matte finish of uniform color.

Poly-Crete MDB

This is our 100% solids, aromatic cementitious urethane system with a broadcast aggregate. Poly-Crete MDB uses a natural quartz aggregate and is available in a wide range of standard colors.

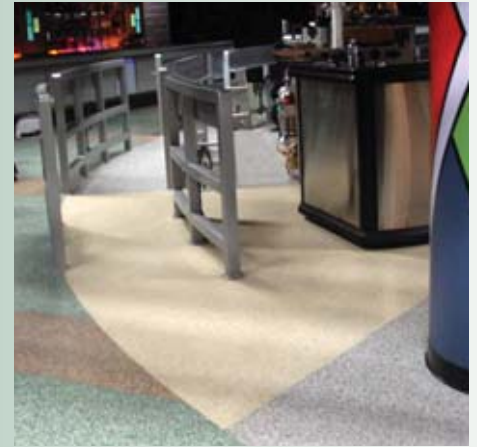
Poly-Crete SLB

A 100% solids, aromatic cementitious urethane system with a self leveling quartz broadcast aggregate.

Applications: Kitchens, Laboratories, Shower/Locker Rooms, Manufacturing Plants, Pharmaceutical Plants, Food Processing Plants, Meat Packing Plants, Research & Clean Rooms, Supermarkets, Animal Shelters, Schools, Detention Facilities, Garage/Service Areas, Cafeterias and Hallways/Corridors



Time & Material Saving Hybrids



Hybri-Flex MQ

A 100% solids, decorative quartz system utilizing colored quartz aggregates with clear coatings. Quartz is available in two grades: Q28 (fine) and Q11 (coarse).

Hybri-Flex MC

A 100% solids, decorative chip system utilizing colored chips with clear coatings. Chips are available in two sizes: Macro and Micro.

Hybri-Flex MB

A 100% solids, natural quartz system utilizing neutral-colored aggregate with pigmented coatings. Quartz is available in two grades: Q28 (fine) and Q11 (coarse).

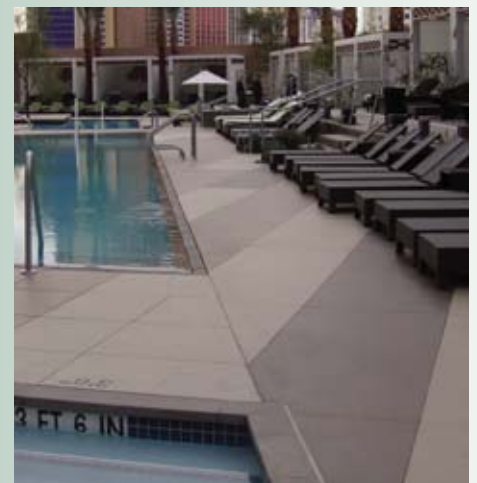
Applications: Waterparks/Pool Areas, Educational Facilities, Indoor and Outdoor Walkways, Retail, Restaurants, Pharmaceutical Plants, Veterinary Facilities and Healthcare Facilities

Series M

Hybri-Flex M utilizes our methyl methacrylate build and topcoat products offering ultra-fast curing making it ideal for applications where minimum downtime is required. It also offers excellent wear characteristics and UV protection making it ideal for outdoor applications.



Hybri-Flex® is Dur-A-Flex's line of hybrid flooring systems; a combination of our best products to meet the needs of virtually any flooring application. All Hybri-Flex systems start with our unique, self priming cementitious urethane base coat that offers tenacious bonding in a self leveling formula, while tolerating elevated moisture levels. As a result, Hybri-Flex flooring systems can be installed over 5 - 7 day old concrete, making it ideal for fast-track installations. Choose from a series of build and topcoats to meet your specific job requirements. Hybri-Flex systems are VOC- and ADA-compliant, meet USDA, FDA and CFIA standards and contribute to LEED credits.





Series A

Hybri-Flex A utilizes our poly-aspartic build and topcoat products offering excellent chemical resistance and wear characteristics with a high gloss finish. It is also odorless, making it ideal for occupied areas.

Hybri-Flex AC

A 100% solids, low odor, decorative chip system. Chips are available in two sizes: Macro and Micro.

Hybri-Flex AQ

A 100% solids, no odor, decorative quartz system. Quartz is available in blended and solid colors and in two grades: Q28 (fine) and Q11 (coarse).

Applications: Malls, Hospitals, Labs, Commercial Businesses and Educational Facilities



Series E

Hybri-Flex E utilizes our broad line of epoxy products offering a cost effective flooring solution.

Hybri-Flex EQ

A decorative color quartz system available in blended and solid colors and in two grades: Q28 (fine) and Q11 (coarse).

Hybri-Flex EC

A decorative chip system available in standard and custom (Macro only) blended colors and in two sizes: Macro and Micro.

Hybri-Flex EB

A natural, quartz system utilizing neutral-colored aggregate with pigmented coatings. Quartz is available in two grades: Q28 (fine) and Q11 (coarse).

Hybri-Flex ES

A smooth finish system utilizing solid color resins with our wear-resistant Armor Top coating.

Applications: Manufacturing Areas, Pharmaceutical Plants and Warehouses



800-253-3539 | dur-a-flex.com



DUR-A-FLEX
INNOVATION FROM THE FLOOR UP

Heavy Duty Epoxies & Urethanes



Performance Topcoats

Epoxy and Urethane topcoats improve the performance and longevity of your floors and make them easier to maintain. A choice of high gloss, low glare satin or flat finishes lets you brighten or soften the lighting in your facility.

Enviro-Top®

A two component, clear waterborne aliphatic urethane protective coating available in a gloss or satin finish.

Poly-Crete CF

As Poly-Crete products have increased in popularity, the customer demand for a UV stable topcoat (with a glossy appearance) has been met. This revolutionary topcoat product is the perfect solution for a color stable floor that is not affected by UV light. Use Poly-Crete CF to refresh your existing cementitious urethane floor to "like new" standards for a fraction of the cost of the original floor.

Ultra-Clear

A clear, two component 100% solids, thermosetting epoxy designed specifically for the Dur-A-Quartz and Dur-A-Chip decorative flooring systems. Ultra-Clear protects against UV rays and helps prevent ambering.

Poly-Thane 1

Superior corrosion resistant, clear coating for the highest level of chemical resistance (may amber slightly); recommended as a topcoat for Shop Floor, Dur-A-Gard and Dur-A-Quartz flooring systems.

Poly-Thane 2 High Solids

Abrasion and stain resistant, non-ambering protective coating; recommended as a topcoat over Dur-A-Gard, Shop Floor, Novolac or Dur-A-Quartz systems.

Armor Top®

A three component aliphatic urethane protective coating. Formulated for high traffic areas to protect against chemicals and wear; recommended as a final topcoat over Dur-A-Glaze #4 or Dur-A-Gard systems.

Dur-A-Glaze #5

Our no-odor, fast curing, UV resistant, clear topcoat; recommended as a topcoat for Dur-A-Quartz and Dur-A-Chip decorative floor systems or when an odor free topcoat is required.

Dur-A-Glaze Novolac

This 100% solids, no VOC, epoxy coating is specified as a topcoat when the ability to withstand corrosion and high heat is a priority.

Crete-Gard

Formulated especially for Dur-A-Crete trowel applied mortar systems, this advanced chemistry, super high viscosity hardener, saves time and material—enabling you to finish your floor with a single coating.

Applications: Aircraft Hangars, Clean Rooms, Plastic Manufacturing Plants, Fire-Rescue Emergency, Kennels, Pharmaceutical Plants, Automotive Service Areas, Chemical Storage Areas, AGV Charging Areas and Food Processing (CF and Novolac)





Coatings/Floor & Wall

Versatile, performance proven, chemical and abrasion resistant epoxy coatings are the principal components of Dur-A-Flex flooring systems. Our special formulations and additives include chemical, UV and heat resistant coatings, plus Novolac and the EPA-Registered Bio-Pruf™ antimicrobial treatment.

Dur-A-Glaze #4

Dur-A-Glaze #4 functions primarily as a matrix component and aggregate binder for Dur-A-Quartz, Shop Floor and Dur-A-Crete systems. The most advanced product of its kind, this clear, two component, liquid formulation of 100% solids epoxy resins gives you optimum hardness with impact and vibration resistance. Dur-A-Glaze #4 special purpose formulations include "FAST" (cures to "touch dry" in 2 - 3 hours) and "COLD CURE" (for sub -50° F temperatures).

Dur-A-Glaze Novolac

The industry standard for corrosion resistance where high heat resistance is also required. Novolac is also specified as a performance topcoat where 100% solids, no VOC compounds are desired.

Dur-A-Flex Epoxy Flooring with Bio-Pruf™ Antimicrobial Treatment

For long term protection from a broad spectrum of bacteria and fungus, you can specify Bio-Pruf™ with any Dur-A-Flex 100% solids coating. An ideal solution for bathrooms, showers, locker rooms and swimming pool decks.

Dur-A-Gard and Dur-A-Gard SL

Dur-A-Gard forms a smooth, high gloss finish and is also available in an orange peel finish formulation. If standard slip resistant performance is required, simply sprinkle Non-Skid Grit during application. Dur-A-Gard SL contains special fillers, which make it more suitable for self leveling applications where thicker systems from 35 -120 mils are desired.

Dur-A-Wall

Our two component, high build epoxy wall system is ideally suited for application on concrete, wood, drywall, cement board or block.

Dur-A-Wall FGR

A high build, pigmented, two component system that uses the same epoxy system as our Dur-A-Wall system but incorporates a fiberglass mat designed especially for sheetrock wall applications.

Dur-A-Wall VC

This decorative, epoxy wall system is a two component, low odor, 100% thermosetting formulation of Dur-A-Wall pigmented epoxy, Dur-A-Wall clear epoxy and our decorative vinyl chip.

Applications: Laboratories, Clean Rooms, Pharmaceutical Plants, Food Processing Plants, Hospitals, Warehouses, Bottling Plants, Commercial Kitchens, Kennels, Manufacturing Plants, Laundries and Marine Uses

ESD Coatings

Dur-A-Gard ESD

An epoxy-based ESD system offering low odor with a smooth finish. Good abrasion and chemical resistance in a two-component system.

Armor-Stat ESD

An epoxy-urethane ESD system offering superior abrasion and chemical resistance makes it one of the longest-wearing ESD floor systems available in the industry. The three-step system offers our highest static protection from primer through urethane topcoat. Excellent UV resistance ensures consistent color throughout the life of the floor.

Cryl-A-Stat ESD-401

A methyl methacrylate-based acrylic (MMA), this ESD floor sealer is used over standard MMA floor systems offering a quick, one-hour cure for fast installations. Excellent UV resistance provides consistent color stability.



800-253-3539 | dur-a-flex.com



DUR-A-FLEX
INNOVATION FROM THE FLOOR UP

Quick Curing Methyl Methacrylates



The Cryl-A-Flex line of super fast curing methyl methacrylate (MMA) systems meets the most demanding requirements for application in cold interior or exterior environments curing in less than one hour in temperatures as low as -20° F. These VOC-compliant, 100% reactive resins and select graded aggregate fillers form a highly versatile flooring solution. Characteristics include strength, flexibility and a low glare, satin finish. These seamless systems can be finished to meet ADA requirements with a variety of slip resistant or smooth textures. Cryl-A-Flex can be supplied with Bio-Pruf™ antimicrobial additive. All Cryl-A-Flex products meet the guidelines of FDA, USDA, NSF and CFIA.

Applications: Kitchens, Warehouses, Laboratories, Freezers, Meat Packing Plants, Sidewalks, Pharmaceutical, Machine Shops, Chemical Storage Facilities, Food Processing Plants, Radio and Television Studios and Parking Decks

Colors: Standard Cryl-A-Flex pigments, quartz and chip colors. Custom colors available upon request.

Floor Coatings

Cryl-A-Stain®

Cryl-A-Stain is a topical, concrete coloring floor system that provides the decorative beauty of stained / dyed concrete. It delivers affordable, lasting beauty with the added benefit of low maintenance costs.

Resurfacers

Cryl-A-Quartz

The acrylic counterpart to our decorative Dur-A-Quartz resurfacer. Composed of primer, double broadcast of Dur-A-Flex's Q11 or Q28 decorative quartz aggregate into a body coat and two clear, wear resistant topcoats. This system offers a wide variety of surface textures.

Cryl-A-Quartz SL

A self leveling flooring system with a Q11 or Q28 decorative colored quartz aggregate broadcast and two topcoats. This system offers a wide variety of surface textures.

Cryl-A-Floor

This double broadcast system uses natural quartz sand with two solid colored topcoats. This system offers a wide variety of surface textures.

Cryl-A-Floor SL

A self leveling flooring system using the same natural quartz as in the Cryl-A-Floor system with two solid colored topcoats. This system is perfect for uneven substrates, while offering greater impact resistance and high strength for abusive environments.

Cryl-A-Gard SL

A smooth finish, solid color, self leveling overlay system finished with a clear topcoat.

Cryl-A-Chip

A system that uses Micro or Macro decorative color chip to give a very decorative, terrazzo-like appearance. Composed of primer, double broadcast of chips into a body coat and two clear topcoats.

Cryl-A-Chip SL

A self leveling system with decorative chip broadcast and two clear topcoats. The system has excellent hiding power for an uneven or rough substrate and yields greater impact resistance.

Cryl-A-Tex

Polymer concrete is used for the repair of concrete. This includes, but is not limited to, spall, potholes, joint rebuilding, anchor bolt grouting and structural applications.

Cryl-A-Wall VC

The acrylic equivalent to our Dur-A-Wall VC system, this decorative wall system is extremely sanitary, easy to clean and durable.



The Seamless Solution



Sales & Technical Support

Dur-A-Flex has a knowledgeable sales team and technical support department to help you select the most appropriate system for your project from our wide range of products. This support extends to job site and installation assistance as well as engineering assistance for new flooring systems applications.

Custom Samples

Our dedicated custom sample department offers stock samples and custom color matches for every job you do.

Full-Service Specification Assistance

We provide the industry standard 3-part guide specifications—General, Products, Execution—which you can easily incorporate into your project manual. These specifications cover our products in a variety of job site scenarios.

Contact Us:

Dur-A-Flex, Inc.
95 Goodwin Street
East Hartford, CT 06108

Toll Free: **800-253-3539**
Telephone: 860-528-9838
Fax: 860-528-2802
E-mail: contact_us@dur-a-flex.com
Web: www.dur-a-flex.com

No one makes it easier

Every step of the way, you'll experience superior customer service, professionalism, expertise, and finely tuned processes—all the essentials which contribute to a solid business relationship. We call it, "The Seamless Solution."

Research & Development

Our substantial investment in R&D means that whenever you choose a Dur-A-Flex flooring system, you're getting the most tested and innovative products on the market. Performance is the ultimate benchmark, and Dur-A-Flex is determined to deliver the most reliable products together with a complete range of advanced special purpose formulations and additives to meet your unique requirements.

Quality Assurance

Exceptional quality begins at the source. Dur-A-Flex starts with superior raw materials to formulate the industry's finest hardeners, resins and colored quartz aggregates. Manufacturing processes and material handling are strictly controlled and documented as part of our real-time, quality management and batch-tracking processes. In addition to our in-house testing program, our products are evaluated by independent labs to validate test results.



The samples shown are only close approximations and should not be used for specification purposes.
 Contact Dur-A-Flex to obtain actual samples for best color selection.

Standard Colors

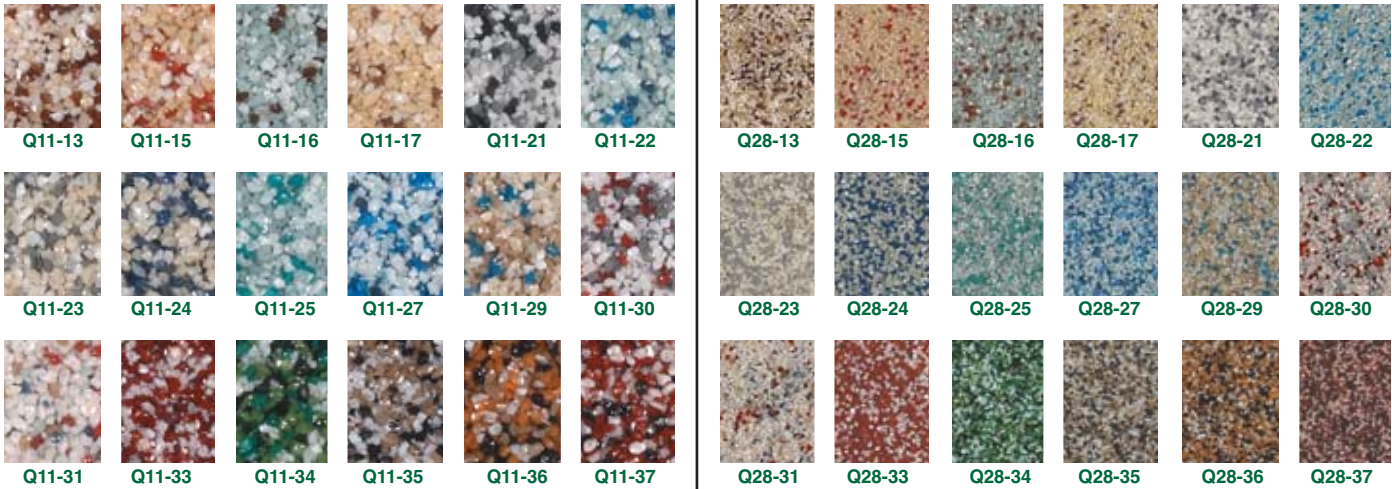


Poly-Crete Colors

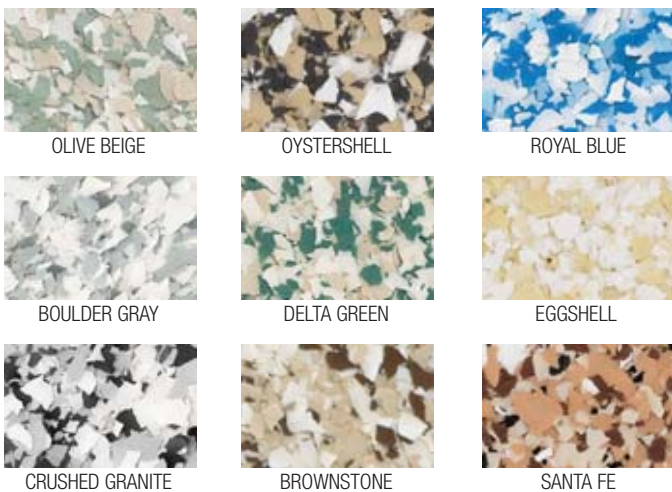


*Not available in MMA **Not available in Shop Floor

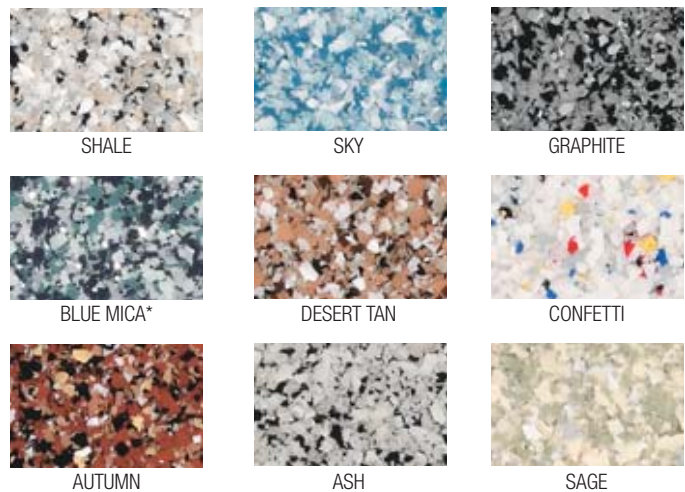
Quartz Blends



Macro Chip Blends



Micro Chip Blends



*Blue Mica contains silver metallic chip.