

HYBRI-FLEX® AQ



- Topcoat** - (Second Topcoat Optional) Clear, Gloss, or Satin Accelera, Accelera LH, or Accelera EXT
- Grout Coat** - Clear Accelera, Accelera LH, or Accelera EXT
- Second Quartz Broadcast** - Clear Dur-A-Glaze #4 with Broadcast of Q28 Decorative Quartz Aggregate
- Quartz Broadcast** - Broadcast of Q28 Decorative Quartz Aggregate into the SL
- Body Coat** - Pigmented Poly-Crete SL
- Primer** - (optional) Pigmented Poly-Crete TF Plus (only required if the substrate is very porous)
- Prepared Substrate** - Concrete Surface Profile (CSP) of 3-4

SYSTEM OVERVIEW

HYBRI-FLEX AQ is a seamless 1/4" decorative quartz floor system featuring a highly moisture tolerant self-priming and self-leveling body coat topped with a double broadcast of decorative quartz aggregate and finished with an Accelera fast-curing, low-odor topcoat for a chemical and abrasion resistant finish.

FEATURES & BENEFITS

• Self-Leveling

A uniform, more even floor system

• Moisture Mitigating

Installs in more environments, including those with high moisture levels up to 99% RH

• Decorative

Multiple blends of pigmented quartz aggregate for a unique look

• Non Slip

Textured finishes aid in a safer floor, even when wet

• Thermal Shock Resistance

Usable in harsh environments with high thermal cycling or rapid changes in temperature

COMMON USE SITES

- Hospitals
- Cleanrooms
- Laboratories
- Pharmaceutical
- Lobbies
- Restrooms
- Retail
- Schools
- Supermarkets



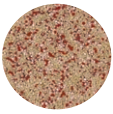
COLORS

Available in a wide variety of standard Q28 quartz aggregate blends. For a full list of available colors visit **DUR-A-FLEX.COM**.

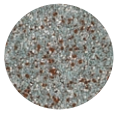
Q28 COLORS



Q28-13



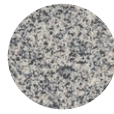
Q28-15



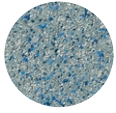
Q28-16



Q28-17



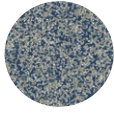
Q28-21



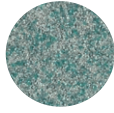
Q28-22



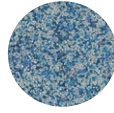
Q28-23



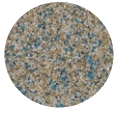
Q28-24



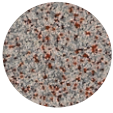
Q28-25



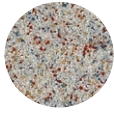
Q28-27



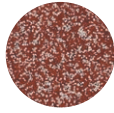
Q28-29



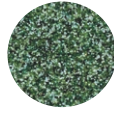
Q28-30



Q28-31



Q28-33



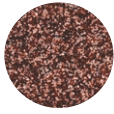
Q28-34



Q28-35



Q28-36



Q28-37



IMPORTANT!

Before using DUR-A-FLEX products, read and understand its accompanying Safety Data Sheet & Application Instructions for important safety information.

STANDARD TERMS AND CONDITIONS OF SALE, INCLUDING STANDARD WARRANTY APPLY - VISIT **DUR-A-FLEX.COM** FOR THE LATEST VERSION



DUR-A-FLEX
INNOVATION FROM THE FLOOR UP

CONNECTICUT | GEORGIA | ILLINOIS | CALIFORNIA
TOLL FREE 800-253-3539 | 860-528-9838 | DUR-A-FLEX.COM